

ACCESSORI PER FOTOCELLULE

CATARIFRANGENTI

STAFFE

STRINGIRAGGIO (OTTURATORE)

CARTA RIFRANGENTE

ACCESSORIES FOR PHOTOELECTRIC SENSORS

REAR REFLECTOR

MOUNTING BRACKETS

SHUTTER

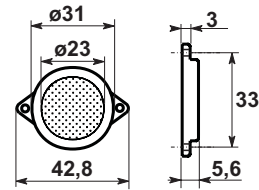
REFLECTOR PAPER

CATARIFRANGENTE SCT1 - SCT1 REAR REFLECTOR



DIMENSIONI MECCANICHE

MECHANICAL SIZE



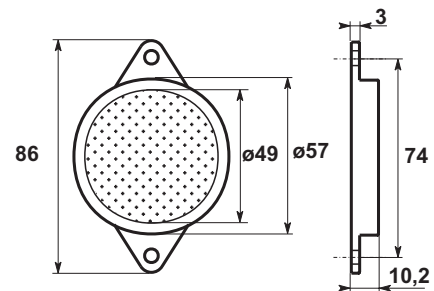
SCT1 = Catarifrangente \varnothing 23mm / 23 mm \varnothing rear reflector

CATARIFRANGENTE SCT2 - SCT2 REAR REFLECTOR



DIMENSIONI MECCANICHE

MECHANICAL SIZE



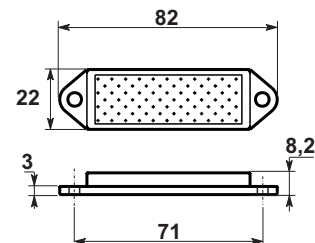
SCT2 = Catarifrangente \varnothing 49mm / 49 mm \varnothing rear reflector

CATARIFRANGENTE SCT3 - SCT3 REAR REFLECTOR



DIMENSIONI MECCANICHE

MECHANICAL SIZE



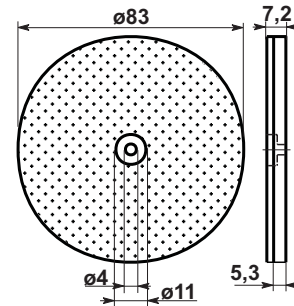
SCT3 = Catarifrangente rettangolare / rectangular rear reflector

CATARIFRANGENTE SCT4 - SCT4 REAR REFLECTOR



DIMENSIONI MECCANICHE

MECHANICAL SIZE



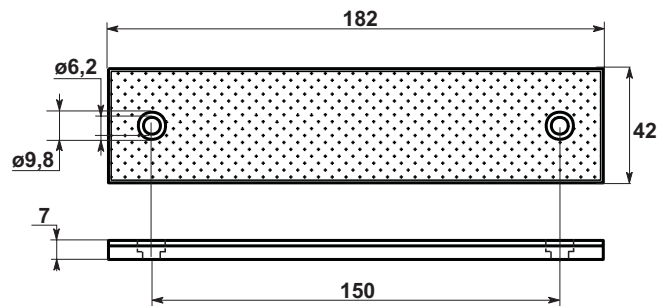
SCT4 = Catarifrangente \varnothing 83mm / 83 mm \varnothing rear reflector

CATARIFRANGENTE SCT5 - SCT5 REAR REFLECTOR



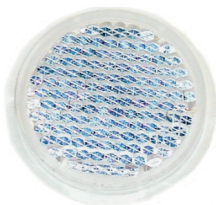
DIMENSIONI MECCANICHE

MECHANICAL SIZE



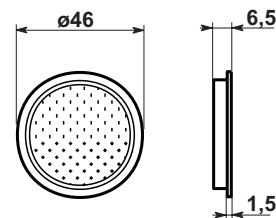
SCT5 = Catarifrangente rettangolare / rectangular rear reflector

CATARIFRANGENTE SCT7 - SCT7 REAR REFLECTOR



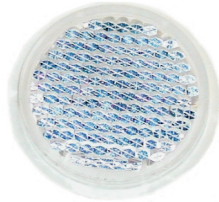
DIMENSIONI MECCANICHE

MECHANICAL SIZE



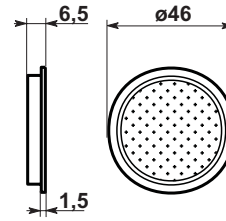
SCT7 = Catarifrangente \varnothing 46mm / 46 mm \varnothing rear reflector

CATARIFRANGENTE SCT8 - SCT8 REAR REFLECTOR



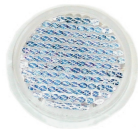
DIMENSIONI MECCANICHE

MECHANICAL SIZE



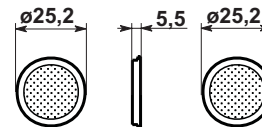
SCT8 = Catarifrangente Ø 46mm con adesivo / 46 mm Ø sticker rear reflector

CATARIFRANGENTI SCT9 / SCT9-A - SCT9 / SCT9-A REAR REFLECTOR



DIMENSIONI MECCANICHE

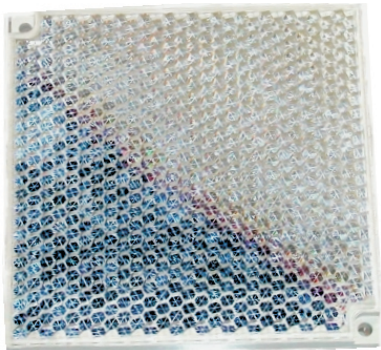
MECHANICAL SIZE



SCT9= Catarifrangente Ø25mm / 25 mm Ø rear reflector

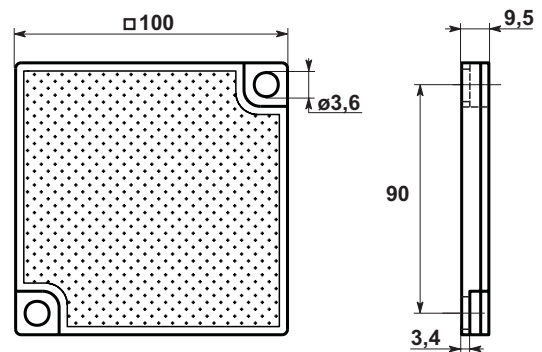
SCT9-A= Catarifrangente Ø25 mm con adesivo / 25 mm Ø rear reflector

CATARIFRANGENTE SCT10 - SCT10 REAR REFLECTOR



DIMENSIONI MECCANICHE

MECHANICAL SIZE



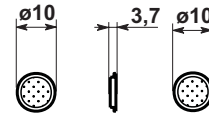
SCT10 = Catarifrangente forma quadrata / square rear reflector

CATARIFRANGENTI SCT11 / SCT11-A - SCT11 / SCT11-A REAR REFLECTOR



DIMENSIONI MECCANICHE

MECHANICAL SIZE



SCT11= Catarifrangente Ø10mm / 10 mm Ø rear reflector

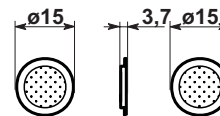
SCT11-A= Catarifrangente Ø10mm con adesivo / 10 mm Ø sticker rear reflector

CATARIFRANGENTI SCT12 / SCT12-A - SCT12 / SCT12-A REAR REFLECTOR



DIMENSIONI MECCANICHE

MECHANICAL SIZE



SCT12= Catarifrangente Ø15mm / 15mm Ø rear reflector

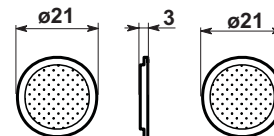
SCT12-A= Catarifrangente Ø15mm con adesivo / 15mm Ø sticker rear reflector

CATARIFRANGENTI SCT13 / SCT13-A - SCT13 / SCT13-A REAR REFLECTOR



DIMENSIONI MECCANICHE

MECHANICAL SIZE



SCT13= Catarifrangente Ø21mm / Ø21 mm rear reflector

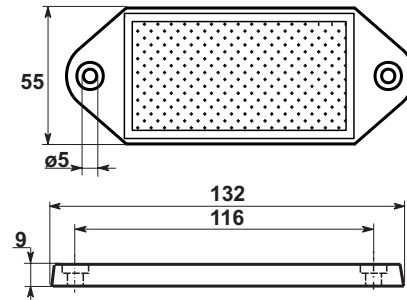
SCT13-A= Catarifrangente Ø21 mm con adesivo / 21 mm Ø sticker rear reflector

CATARIFRANGENTE SCT14 - SCT14 REAR REFLECTOR



DIMENSIONI MECCANICHE

MECHANICAL SIZE



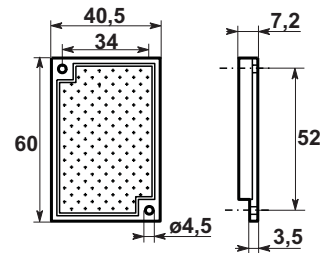
SCT14 = Catarifrangente rettangolare / rectangular rear reflector

CATARIFRANGENTE SCT15 - SCT15 REAR REFLECTOR



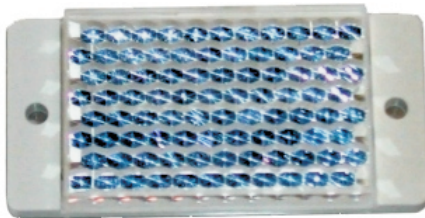
DIMENSIONI MECCANICHE

MECHANICAL SIZE



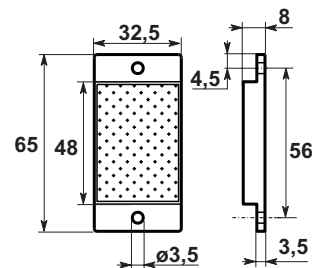
SCT15 = Catarifrangente rettangolare / rectangular rear reflector

CATARIFRANGENTE SCT16 - SCT16 REAR REFLECTOR



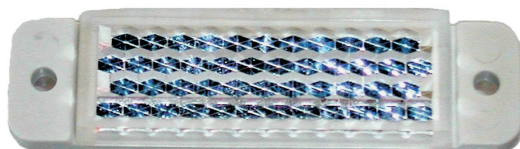
DIMENSIONI MECCANICHE

MECHANICAL SIZE



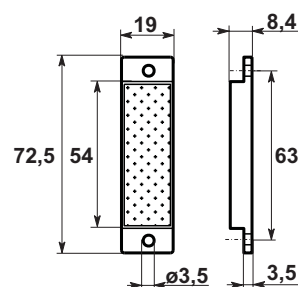
SCT16 = Catarifrangente rettangolare / rectangular rear reflector

CATARIFRANGENTE SCT17 - SCT17 REAR REFLECTOR



DIMENSIONI MECCANICHE

MECHANICAL SIZE



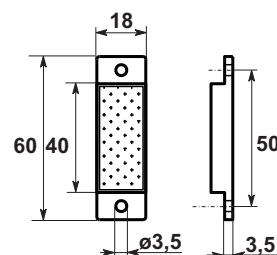
SCT17 = Catarifrangente rettangolare / rectangular rear reflector

CATARIFRANGENTE SCT18 - SCT18 REAR REFLECTOR



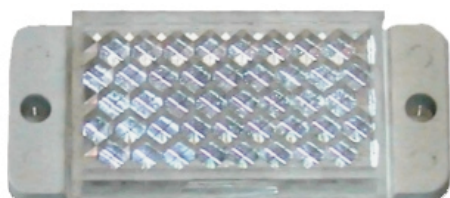
DIMENSIONI MECCANICHE

MECHANICAL SIZE



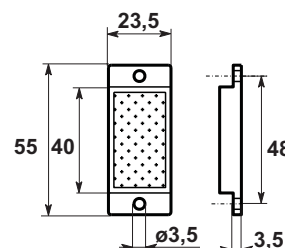
SCT18 = Catarifrangente rettangolare / rectangular rear reflector

CATARIFRANGENTE SCT19 - SCT19 REAR REFLECTOR



DIMENSIONI MECCANICHE

MECHANICAL SIZE



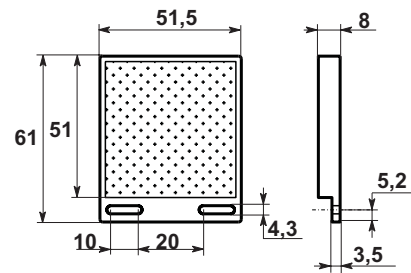
SCT19 = Catarifrangente rettangolare / rectangular rear reflector

CATARIFRANGENTE SCT20 - *SCT20 REAR REFLECTOR*



DIMENSIONI MECCANICHE

MECHANICAL SIZE



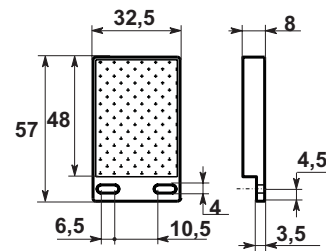
SCT20 = Catarifrangente forma quadrata / square rear reflector

CATARIFRANGENTE SCT21 - *SCT21 REAR REFLECTOR*



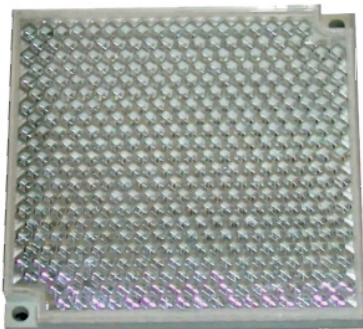
DIMENSIONI MECCANICHE

MECHANICAL SIZE



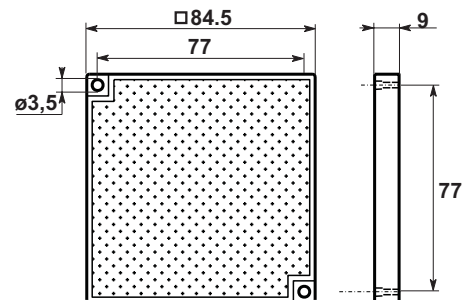
SCT21 = Catarifrangente rettangolare / rectangular rear reflector

CATARIFRANGENTE SCT23 - *SCT23 REAR REFLECTOR*



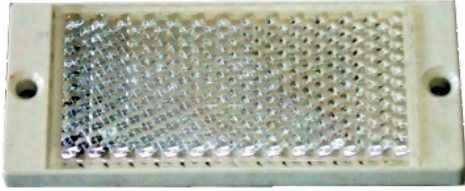
DIMENSIONI MECCANICHE

MECHANICAL SIZE



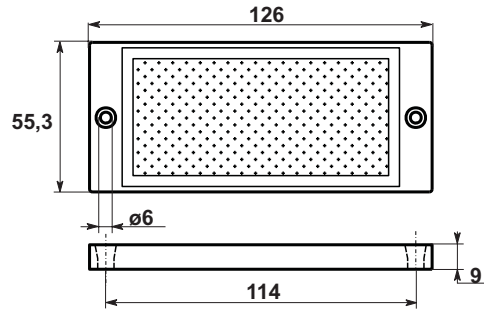
SCT23 = Catarifrangente forma quadrata / square rear reflector

CATARIFRANGENTE SCT24 - *SCT24 REAR REFLECTOR*



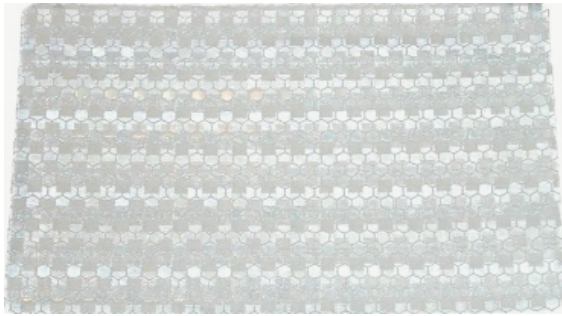
DIMENSIONI MECCANICHE

MECHANICAL SIZE



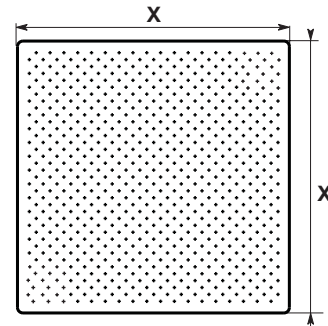
SCT24 = Catarifrangente rettangolare / rectangular rear reflector

CARTA RIFRANGENTE - *REFLECTOR PAPER*



DIMENSIONI MECCANICHE

MECHANICAL SIZE

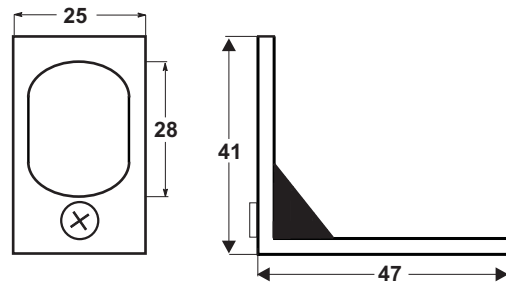


STF18 STAFFA DI FISSAGGIO - *STF18 MOUNTING BRACKET*



DIMENSIONI MECCANICHE

MECHANICAL SIZE



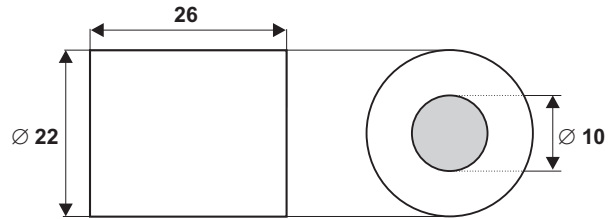
STF18 = Staffa di fissaggio per fotocellule Ø 18mm / mounting bracket for 18 mm Ø optic sensors

STRINGIRAGGIO - SHUTTER



DIMENSIONI MECCANICHE

MECHANICAL SIZE



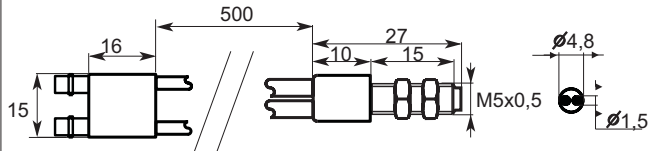
XXX = STRINGIRAGGIO Ø / SHUTTER Ø

Fibra ottica a tasteggio diretto - Diffuse type optic fiber



DIMENSIONI MECCANICHE

MECHANICAL SIZE



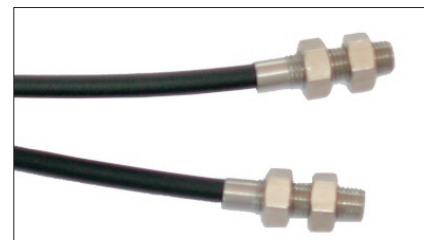
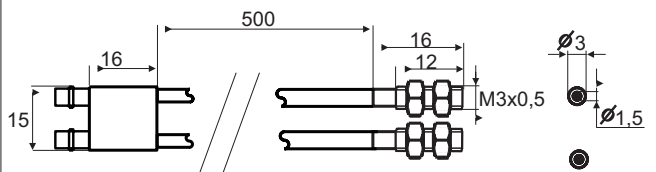
FPO/D = fibra ottica tasteggio diretto / diffuse type optic fiber

Fibra ottica a barriera - Beam type optic fiber



DIMENSIONI MECCANICHE

MECHANICAL SIZE



FPO/B = fibra ottica barriera / beam type optic fiber

Altri prodotti

- interruttori di prossimità induttivi;
- interruttori di prossimità capacitivi;
- interruttori di prossimità magnetici;
- interruttori di prossimità fotoelettrici;

- connettori e cassette di connessione per sensori;

- encoder incrementali ed assoluti;

- alimentatori / interfacce per sensori;
- alimentatori da rete e da secondario per uso generico;

- voltmetri, amperometri, contagiri, visualizzatori a pannello;
- contaimpulsi mono e bidirezionali, contaproduzione, contagiri;
- termometri e termoregolatori

- schede logiche programmabili per uso OEM;

- pulsanteria e finecorsa meccanici;

Other products:

- *inductive proximity switches;*
- *capacitive proximity switches;*
- *magnetic proximity switches;*
- *photo-electric sensors & proximity switches;*

- *connectors & connection boxes for sensor;*

- *incremental & absolute encoders;*

- *supply units / interfaces for sensors;*
- *power supply units for general purpose;*

- *voltmeters, ammeters, revolution counters, panel displays;*
- *counters mono & bi-directional, timers, revolution counters;*
- *thermometers & temperature controllers;*

- *OEM programmable logic cards;*

- *push-button & mechanical limit switches;*